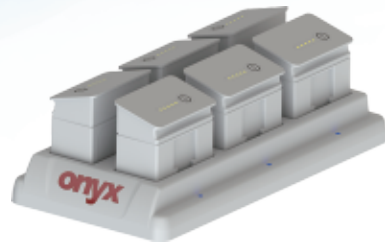




Venus
Mobile Cart Computer



6-slot Power Bank

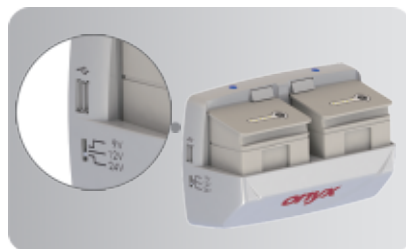
The 2nd generation of our 6-slot battery bank introduces the addition of a USB port that offers greater convenience for monitoring battery performance with our ORION software. This trusted power bank continues to offer built-in smart-charging functionality that can quickly and safely charge six batteries in just two hours, and includes a unique safety feature which will automatically start the charging process and stop charging when any unusual signals are detected.

2-slot Power Bank

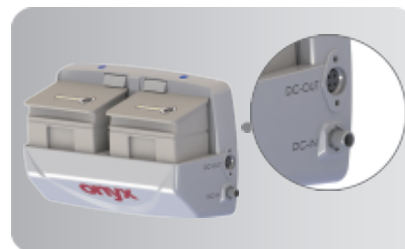
The 2nd generation of our 2-slot battery bank introduces two exciting new features; first, the addition of a USB port offers greater convenience for monitoring battery performance with our ORION software, and second, the battery bank can also convert battery power directly to DC output, effectively making it a uninterruptible power supply that can provide up to fifty watts of power to external devices. This generation continues to provide flexible mounting options for carts, walls and tables to satisfy your unique installation requirements. Cart mounting can further extend the backup power with an additional two batteries, eliminating the risk of unexpected power loss. Wall mounting offers the greatest flexibility as the battery bank can be attached to any fixed vertical surface. Ideal for use in hospitals, wall mounting solutions provide convenient and accessible extended power for medical staff. Our table stand mounting solution is designed to be small enough to free-up extra space at nursing stations or other areas where desktop space is at a premium.



Table Stand



USB port



External DC output

Arm

Specialized clipping type for fitting all kinds of medical / nursing cart. Its ergonomic design which can adjust the screen to the most comfortable viewing angle, also has a professional cable management sleeve providing a cleaner appearance.



24/7 Care Service

Venus
Mobile Cart Computer

onyx
Smart Healthcare

Successful Story

The Venus-Mobile Cart Computer was chosen for use by our nursing staff at the Taiwan Chiang Kai-shek Memory Hospital. The swappable battery saves my time so I can spend more time taking care of more patients. I no longer need to push around a heavy cart from room to room or always look for a socket to charge the battery. I love the lightweight battery and cableless design of Venus which makes the cart lighter and gives me the mobility to move effortlessly and work efficiently. I recommend the Venus series as a practical and useful medical computer for nurses and hospitals.

Venus
Mobile Cart Computer

Hospital: Chiang Kai-shek Memory Hospital
Nurse: Lucy Wu
Location: Taiwan
Benefit: *Extremely Light
*No idle time, Better Efficiency
*Perfect Battery SW



	Venus-192	Venus-222
System		
Processor	Intel® Quad Core J1900	Intel® Quad Core J1900
System Memory	Support DDR3L up to 8GB	Support DDR3L up to 8GB
Size / Resolution	19 inch / 1280 x 1024	22 inch / 1920 x 1080
Smart Battery Module		
Battery Type	6 Cell Lithium Battery x 2	6 Cell Lithium Battery x 2
Battery Capacity	5800 mAh	5800 mAh
Battery Charge Time	2 hr	2 hr
Battery Run Time	4-6hr	4-6hr
Mechanical and Environmental		
Degree of Protection	Front Panel IP65 Certified	Front Panel IP65 Certified
System Cooling	Fan-less	Fan-less
Net Weight	5.5 Kg (12.13 lb)	7 Kg (15.5 lb)
EMC	CE/FCC Class B, UL60601-1, EN 60601-1	CE/FCC Class B, UL60601-1, EN 60601-1

Contact Information

Onyx Healthcare Inc.

2F., No.135, Lane 235, Pao Chiao Rd.,
Xindian Dist., New Taipei City 231,
Taiwan (R.O.C.)
Tel: 886-2-8919-2188
Fax: 886-2-8919-1699
E-mail: sales@onyx-healthcare.com

Onyx Healthcare EUROPE B.V.

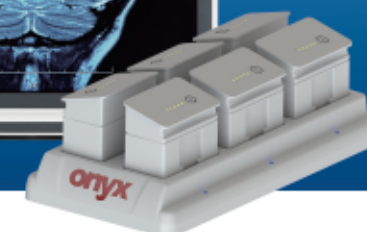
Ekkersrijt 4002, 5692 DA Son,
The Netherlands
Tel: +31-(0)499-745600
E-mail: eusales@onyx-healthcare.com

ONYX Healthcare USA, Inc.

CA Office: 324 W. Blueridge Ave.,
Orange, CA 92865 NJ Office:
3 Crown Plaza, Hazlet, NJ 07730
Tel: +1-714-792-0774
Fax: +1-714-792-0481
E-mail: usasales@onyx-healthcare.com

www.onyx-healthcare.com

onyx
Smart Healthcare



24/7 Care
Service

Venus
Mobile Cart Computer

www.onyx-healthcare.com



About *Venus*

19" & 22" inch Mobile Cart Computer

Wide product range for both 4:3 and 16:9 truly cableless design for easy deployment

Power Bank – 6 slots / 2 slots

Hi-speed quick recharge, less than 2 hours per battery pack

Dual Hot-swappable Batteries

Dual battery provides 125Wh power for standing 6 hours of operation Run nonstop 24/7 by swapping batteries

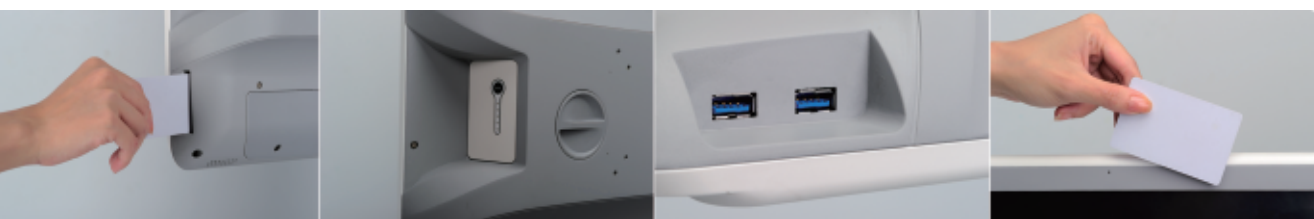


Lightweight Design

Magnesium alloy rear cover provides durable strength, light weight, and great heat dissipation.

ORION

A remote software management application for Onyx medical computers



Smartcard

Swappable Battery

USB 3.0

RFID

onyx
Smart Healthcare



40% Weight Off – Make the Cart Lighter

Venus's battery pack only weights 300g which is much lighter than traditional cart battery (20kg). Venus also adapt unique magnesium casing which makes the total weight at only 5.5kg.



300g



Seamless Care Services – Dual Hot Swappable Batteries

Non-stop Care service become real because VENUS built-in two hot swappable batteries, all medical carts are ready to service medical staffs by only swapping two batteries.



Ergonomic Illumination - Reading Light Bar

Ergonomic reading light bar design at 36 degree towards down which can avoid disturbing patients at night and also improve comfort of reading to nurses.



Reading Light Bar



Flexible Budget Control – Fit All Kinds of Medical Carts

Because of built-in battery, upgrading existing non-battery/non-computer medical carts be computerized by least investment become real. Venus is not only suitable for new cart but also fitting any existing medical cart.

Venus
Mobile Cart Computer



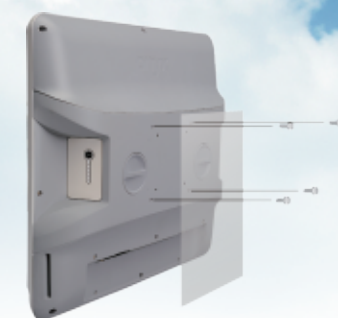
24/12/9V DC Power Output

In addition to being a fully mobile, cableless, battery powered unit, the Venus can provide direct DC power to other medical devices and accessories.



High Power Density – Dual Batteries Last for 6 hours

In order to provide 6 hrs of stable/non-stop service, Venus's battery pack adopts a Japanese cell at 5800mAh for providing reliable 125Wh power to medical staffs. Specialized water-proof design and 1M drop protection provide a worry-free user experience.



Sanitation Management – Totally Sealed Hosing Design

Fan-less and no vent hole design, both unique features of Venus, reduce the risk of cross-infection dramatically and also make daily cleaning quick and safe. Front IP65 and body IPX1 design provide the most reliable proof against water leakage.



ORION

ORION is designed with an intuitive and user-friendly graphical user interface that offers unlimited control and ease of use for IT managers in healthcare environments. The greatest benefit of ORION is its usefulness in managing large numbers of devices from a centralized location.



24/7 Care Service

www.onyx-healthcare.com

onyx
Smart Healthcare